

SOCIAL HOUSING GREEN DEAL TOOLKIT – Summary



Green Deal Provider



Lead Green Deal Partner/
Green Deal Partner



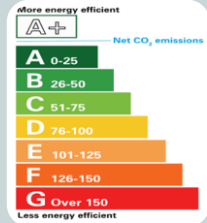
Green Deal Producer



Green Deal Promoter



Green Deal Service Provider



Not in the Green Deal

THE FULL REPORT CAN BE DOWNLOADED AT
<http://www.shap.uk.com/reports/>

CONTROLLED COPY – 1 February 2013 – version SHAP/TK/1.1

ECO chapter updated – Green Deal Provider list added

We reserve the right to amend this document in the future without notice to those who have already accessed this version.

SHAP Task and Finish Report Group
Report Authors:

Richard Baines

Black Country Housing Group

Cliff Horrocks

WHG (Walsall Housing Group)

Rosemary Coyne

SHAP

INTRODUCTION

The purpose of this toolkit is to provide an introduction to the possible roles that Local Authorities and organisations with large housing portfolios can take as the Green Deal is launched. The possible Green Deal options are set out in diagrams and flowcharts and the report includes a new role of 'Green Deal Producer' which was identified by the Green Deal Options Appraisal carried out by the four Black Country Local Authorities. The key questions to be considered when deciding on a Green Deal role are summarised in a simple flowchart which can be used to provide briefings to senior management teams and elected members.

The report includes an introduction to:

- The Green Deal
- The Energy Companies Obligation (ECO)
- Green Deal roles
- Questions to consider when deciding on choosing a Green Deal Provider/Partner/Installer
- The opportunities for your contractors/tenants – residential and business/ residents/ communities to benefit from Green Deal and ECO as households, suppliers, installers.

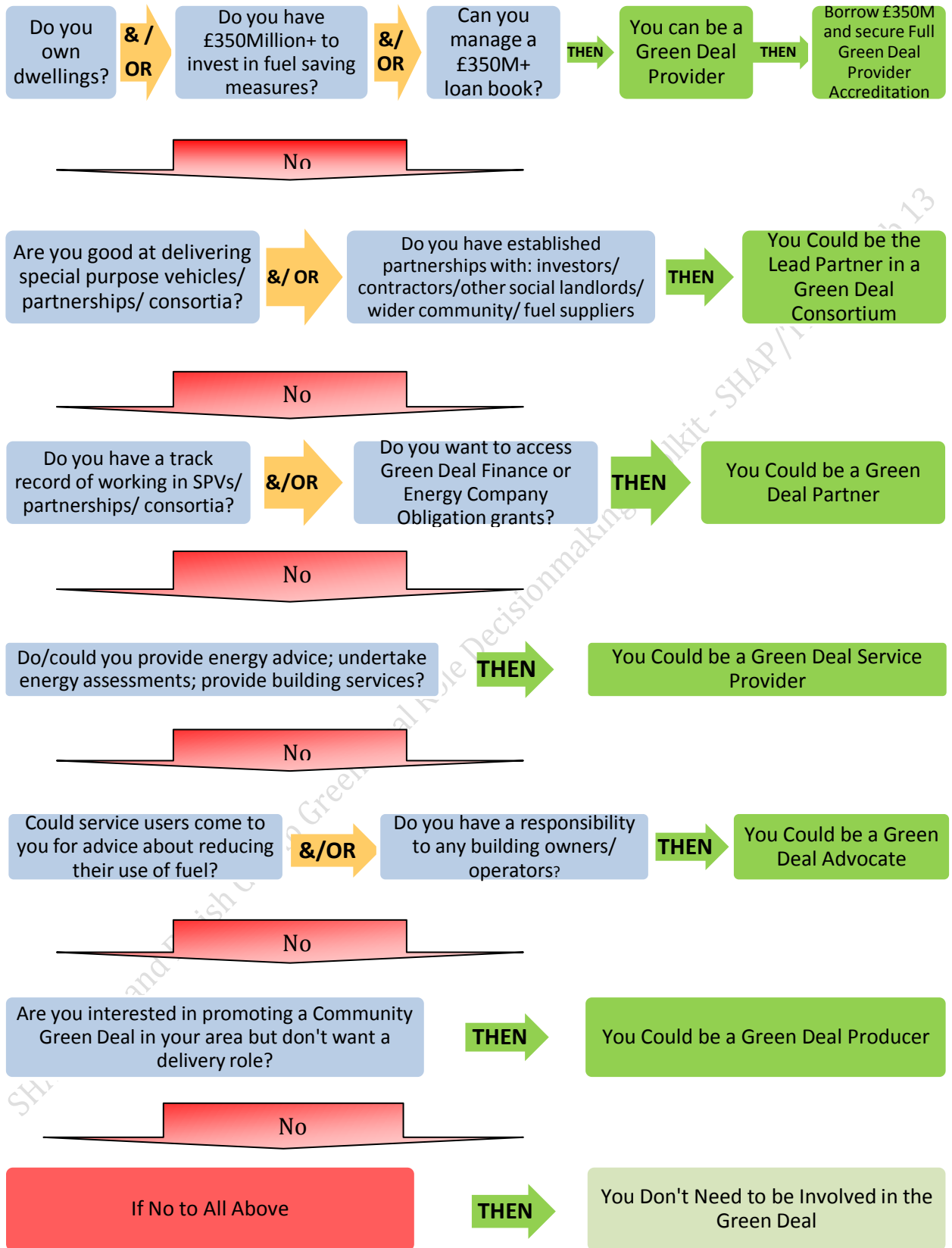
The report contains internal links for rapid navigation between sections. The report will be updated periodically as delivery of Green Deals proceeds and learning develops.

OTHER QUESTIONS TO ASK IF SELECTING A GREEN DEAL PROVIDER, PARTNER OR INSTALLER INCLUDE:

What are important issues for my organisation?

1. What is the Green Deal interest rate and does it vary from Provider to Provider?
2. Quality assurance process during the Green Deal process including assessment, delivery, aftercare
3. Are workforce employed or sub-contractors and can my own contractors be engaged as sub-contractors?
4. Is there a difference in the quality of products proposed in the Green Deal Assessment?
5. What is the track record of a Green Deal Provider in accessing ECO?
6. How do I manage the reputational risk to my organisation from partnering with/endorsing companies involved in Green Deal?
7. How can the local population benefit from delivery of Green Deal in their area?
8. What is the approach of the Green Deal Provider to whole area Community Green Deal projects?

GREEN DEAL DECISIONMAKING FLOWCHART

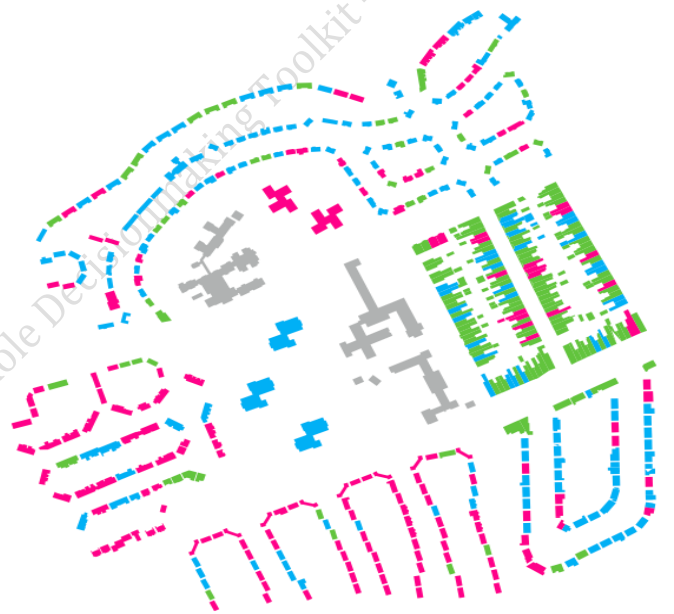


SHAP COMMUNITY GREEN DEAL

The [Community Green Deal](#) is proposed as a locally-based, area-wide response to the delivery of the Green Deal and ultimately the UK's medium to long-term carbon reduction targets. It would deliver whole home retrofits to achieve 80% CO₂ reductions for communities of between 750 and 3,000 homes.

It would be delivered by trusted local delivery bodies working in partnership with communities. These delivery bodies would bring together Local Authorities, Registered Providers and ALMOs in order to pool resources, achieve economies of scale and access finance.

The Community Green Deal model was originally proposed to be led by major investment in social housing stock which would in the process benefit owner occupiers and private landlords, with retrofit works being carried out by local delivery bodies. However, there are several examples of communities and community groups starting to develop Community Green Deal type programmes. Examples include pilots funded through LEAF.¹



The Community Green Deal report and its Companion Guides can be downloaded [here](#).

The SHAP Community Green Deal report includes 2 diagrammes of how the process would work. The first shows 5 building blocks which support establishment of a neighbourhood scale retrofit programme. The second shows an indicative approach to financing the programme

Birmingham Energy Savers (BES) was launched on 1 February 2013. The BES team believe that the Green Deal can only be delivered at scale if it follows a Community Green Deal approach.

¹ LEAF - Local Energy Assessment Fund, managed by a number of community networks and administered by the Energy Saving Trust, run as a competition, with the chance for around 200 community organisations to get to grips with energy efficiency and renewable energy generation. The LEAF projects evaluation is not yet available.